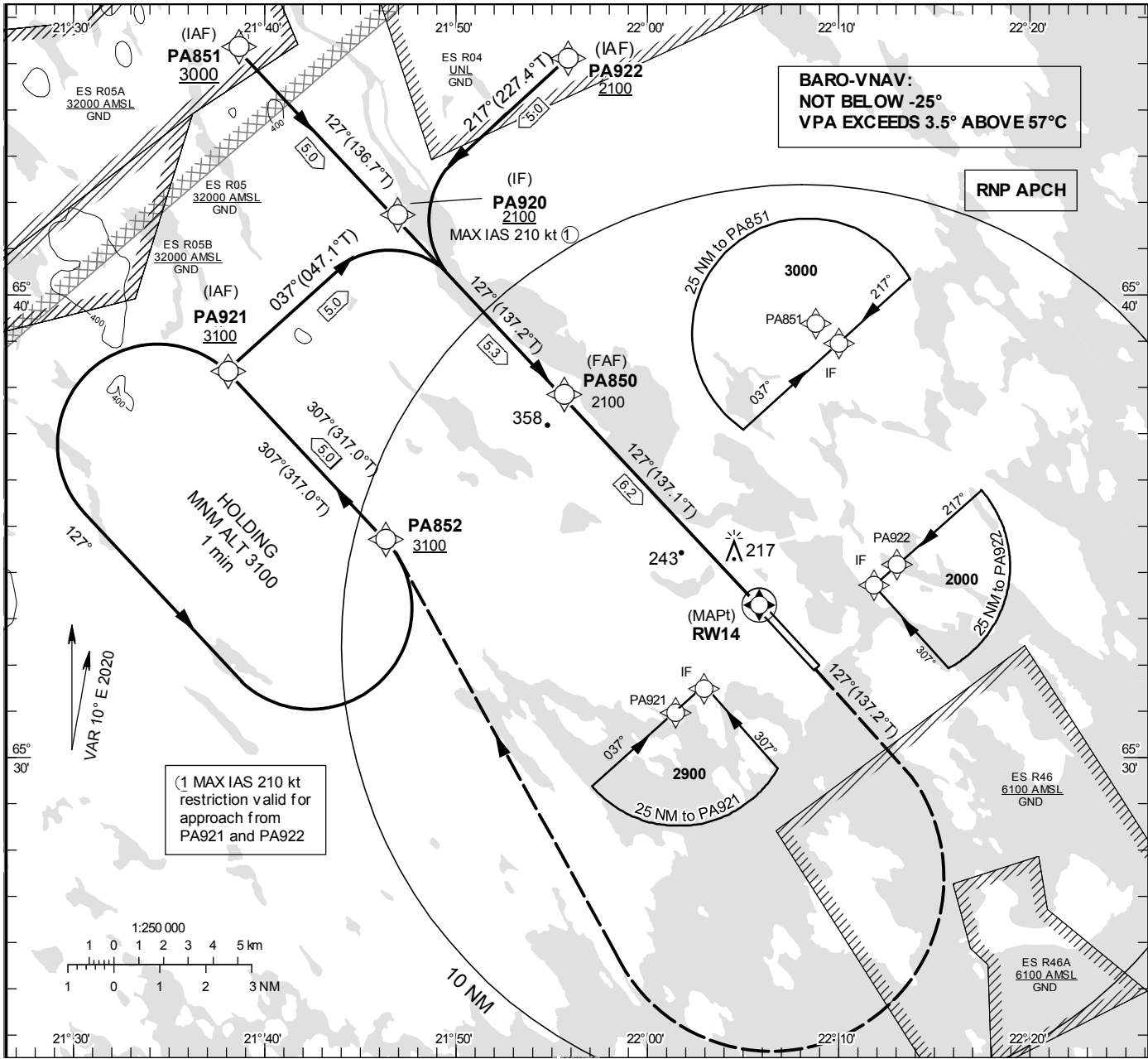


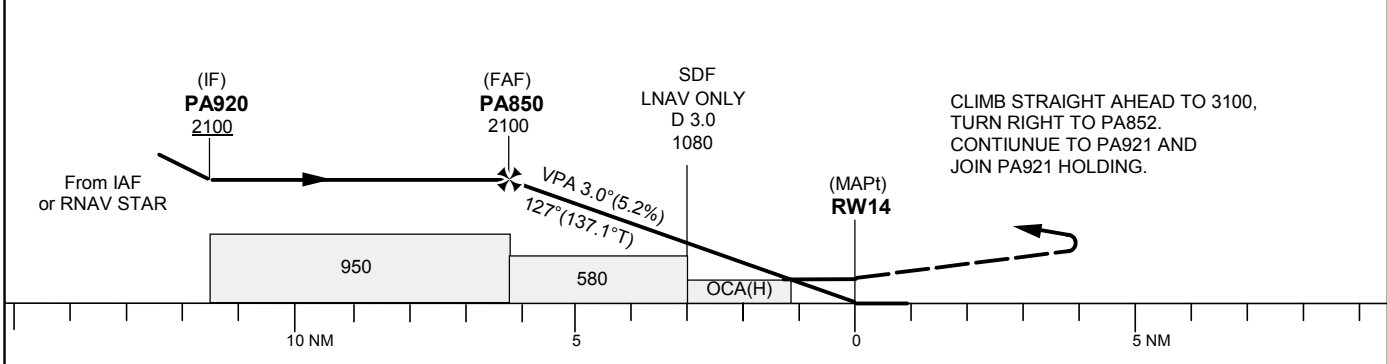
INSTRUMENT  
APPROACH  
CHART – ICAO

THR ELEV 65.3 ft, AD ELEV 65 ft  
OCH are related to THR.  
BRG are MAG (True).  
ALT, HGT and ELEV in ft.

KALLAX TOWER	128.200
KALLAX APPROACH	125.450



TA 5000 ft AMSL RDH 50 ft



OCA (H)					Final approach	Distance FAF-MAPt 6.2 NM									
Cat of ACFT	A	B	C	D	Dist to RW14	6		5		4		3		2	
LNAV/VNAV	348 (283)	360 (295)	368 (303)	378 (313)	ALT	2030		1710		1390		1070		750	
LNAV	490 (430)				GS	kt	80	100	120	140	160	180			
					Rate of descent	ft/min	425	530	635	745	850	955			

CHANGE: Editorial

## LULEÅ/Kallax

## RNP RWY 14 via PA921

Path Term	Waypoint Identifier	Fly-over	Course °M(°T)	Dist (NM)	Turn Dir	Rest Alts (ft AMSL)	Speed Limits (kt)	VPA/ RDH (°/ft)	Rec Navaid	Navigation Specification
IF	PA921	-	-	-	-	+3100	-	-	-	RNP APCH
TF	PA920	-	037°(047.1°)	5.0	-	+2100	-210	-	-	RNP APCH

## RNP RWY 14 via PA922

Path Term	Waypoint Identifier	Fly-over	Course °M(°T)	Dist (NM)	Turn Dir	Rest Alts (ft AMSL)	Speed Limits (kt)	VPA/ RDH (°/ft)	Rec Navaid	Navigation Specification
IF	PA922	-	-	-	-	+2100	-	-	-	RNP APCH
TF	PA920	-	217°(227.4°)	5.0	-	+2100	-210	-	-	RNP APCH

## RNP RWY 14 via PA851

Path Term	Waypoint Identifier	Fly-over	Course °M(°T)	Dist (NM)	Turn Dir	Rest Alts (ft AMSL)	Speed Limits (kt)	VPA/ RDH (°/ft)	Rec Navaid	Navigation Specification
IF	PA851	-	-	-	-	+3000	-	-	-	RNP APCH
TF	PA920	-	127°(136.7°)	5.0	-	+2100	-	-	-	RNP APCH

Path Term	Waypoint Identifier	Fly-over	Course °M(°T)	Dist (NM)	Turn Dir	Rest Alts (ft AMSL)	Speed Limits (kt)	VPA/ RDH (°/ft)	Rec Navaid	Navigation Specification
IF	PA920	-	-	-	-	+2100	-	-	-	RNP APCH
TF	PA850	-	127°(137.2°)	5.3	-	@2100	-	-	-	RNP APCH
TF	RW14	Y	127°(137.1°)	6.2	-	@115	-	-3.0/50	-	RNP APCH
CA	-	-	127°(137.2°)	-	-	+3100	-	-	-	RNP APCH
DF	PA852	-	-	-	R	-	-	-	-	RNP APCH
TF	PA921	-	307° (317.0°)	5.0	-	+3100	-	-	-	RNP APCH

## Holding PA921

Path Term	Waypoint Identifier	Fly-over	Course °M(°T)	Dist (NM)	Turn Dir	Rest Alts (ft AMSL)	Speed Limits (kt)	VPA/ RDH (°/ft)	Rec Navaid	Navigation Specification
HM	PA921	Y	307°(317.0°)	-	L	+3100	-	-	-	RNAV 1